

TECH DATA SHEET

PROJOINT

BLACKSPOT

& ALGAE REMOVER

PROCLEAN TECHNOLOGY



PREPARATION:

PAVING SHOULD BE SOUND, CLEAR OF FURNITURE AND FREE FROM LOOSE DEBRIS. SURFACES CAN BE DAMP PRIOR TO APPLICATION, BUT SHOULD NOT BE APPLIED TO SATURATED PAVING OR WHEN RAIN IS DUE WITHIN THE TREATMENT TIME FRAME.

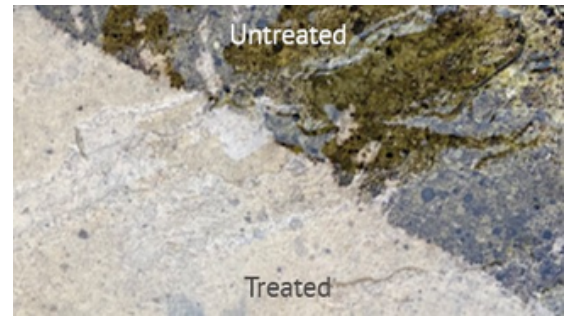
NOTE: EXTERNAL USE ONLY AND DO NOT ALLOW CONTACT WITH METAL.

APPLICATION INSTRUCTIONS:

1: WEARING APPROPRIATE PPE, APPLY THE NEAT SOLUTION TO THE AREA USING EITHER A PLASTIC WATERING CAN OR PRESSURE GARDEN SPRAYER ENSURING SUFFICIENT SATURATION. **2:** THE PRODUCT WILL START TO FIZZ AS IT WORKS, LEAVE THE AREA FOR 3-4 HOURS TO ALLOW THE REMOVER TO ABSORB, **NOTE:** DO NOT ALLOW ANY CONTACT WITH THE TREATED AREA DURING THIS TIME UNTIL THE NEXT STEP. **3:** RINSE THOROUGHLY WITH CLEAN WATER.

IMPORTANT: ALWAYS TEST IN A HIDDEN AREA PRIOR TO USE AND ONLY PROCEED WHEN SATISFIED WITH THE RESULTS. THE TECHNICAL INFORMATION SUPPLIED IS BASED ON DATA OBTAINED BY OUR OWN RESEARCH AND IS CONSIDERED ACCURATE. HOWEVER, NO LIABILITY IS ACCEPTED FOR ANY LOSS OR DAMAGE ARISING DIRECTLY OR INDIRECTLY FROM THE USE OF OUR PRODUCTS, OR FROM THE INFORMATION GIVEN IN PUBLICATIONS. PROSPECTIVE USERS SHOULD THEREFORE SATISFY THEMSELVES BY APPROPRIATE TRIALS THAT THE PRODUCT IS SUITABLE FOR THE INTENDED USE. DO NOT DISCHARGE WASTE INTO DRAINS OR RIVERS.

SYSTEM	ALKALINE BASED BLACKSPOT AND ALGAE REMOVER
STORAGE	STORE IN A COOL AND DRY AT TEMPERATURES BETWEEN 5°C AND 30°C
SHELF LIFE	12 MONTH FROM DATE OF MANUFACTURE
PACKAGING	5LTR CONTAINER
DILUTION	USE NEAT
WORKING TIME	3-4 HOURS IN AMBIENT CONDITIONS
COVERAGE	APPROXIMATELY 25SQM PER 5LTR CONTAINER AND DEPENDENT ON APPLICATION METHOD



APPLICATION IMAGERY

KEY FACTS:

- ✓ READY AND SIMPLE TO USE WITH POWERFUL CLEANING ACTION
- ✓ REMOVES BLACKSPOT, ALGAE, MOSS, LICHEN AND STAINS
- ✓ SUITABLE FOR NATURAL STONE AND CONCRETE PAVING
- ✓ ZERO PRESSURE WASHING OR SCRUBBING REQUIRED

KEEP OUT OF REACH OF CHILDREN AND ANIMALS

HAZARD STATEMENT: CODE HC1635 CONTACT WITH ACIDS LIBERATES TOXIC GAS. CAUSES SEVERE SKIN BURNS AND EYE DAMAGE. VERY TOXIC TO AQUATIC LIFE. KEEP OUT OF REACH FROM CHILDREN.

PRE-CAUTIONARY STATEMENT: P273 AVOID RELEASE TO THE ENVIRONMENT. P280 WEAR PROTECTIVE GLOVES/PROTECTIVE CLOTHING/EYE PROTECTION/FACE PROTECTION. P333+P313 IF SKIN IRRITATION OR RASH OCCURS: GET MEDICAL ADVICE/ATTENTION. P362+P364 TAKE OFF CONTAMINATED CLOTHING AND WASH IT BEFORE REUSE. P337+P313 IF EYE IRRITATION PERSISTS: GET MEDICAL ADVICE/ATTENTION.

STORAGE: STORE OUT OF REACH FROM CHILDREN IN A COOL, DRY, AND FROST FREE ENVIRONMENT AT TEMPERATURES BETWEEN 5°C AND 30°C.

IF SWALLOWED: RINSE MOUTH, DO NOT INDUCE VOMITING
IF ON SKIN OR HAIR: REMOVE CONTAMINATED CLOTHING, RINSE SKIN/HAIR WITH WATER
IF INHALED: REMOVE PERSON TO FRESH AIR AND KEEP COMFORTABLE FOR BREATHING
IF IN EYES: RINSE CAUTIOUSLY WITH WATER. REMOVE CONTACT LENSES, IF PRESENT AND EASY TO DO SO, CONTINUE RINSING

BRUTE STRENGTH PAVING PRODUCTS

